

# Making L<sup>A</sup>T<sub>E</sub>X “Slides”

Albert.Ornstein@Colorado.EDU

15 July 1998

- You can put figures and tables into slides, using the `picture` and `epsfig` and `tabular` environments, *but*
- you can't use the **figure** and **table** environments;  $\text{\LaTeX}$  won't number and caption figures and tables.
- Predefined colors are blue, red, black, white, cyan, magenta, yellow, green.

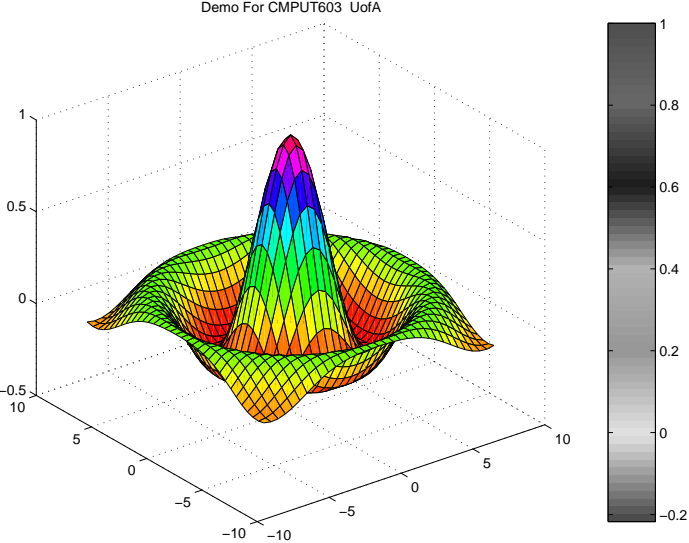
Define colors? Colored formulae? You bet!

`\definecolor{darkgreen}{rgb}{0,0.4,0}`

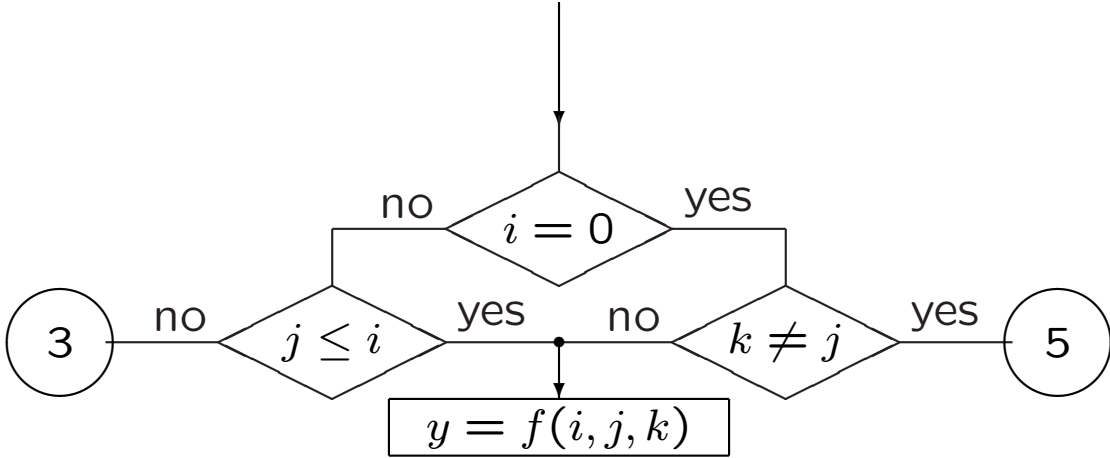
$A = \pi r^2$ :

$$\int_0^r 2\pi x \, dx = \pi r^2.$$

For example, here we import an image from a PostScript file:



and here's a  $\text{\LaTeX}$  picture;



For more information about  $\text{\LaTeX}$  see  
<http://www.colorado.edu/ITS/docs/latex> or  
the printed manuals for  $\text{\LaTeX}$ .

important

Overlays are for presentation  
transparencies!!

Here's a table, produced in the tabular environment. In slides you may **not** put this into a table environment, i.e., surrounded by `\begin{table}` and `\end{table}`.

n	$L_1$	$L_2$	$L_3$	W
2	1/2	1/3	1.28453	0.35728389
	1/3	2/3	1.98720	0.32497238
3	1/4	1/4	2.97378	0.39902682
	1/3	1/2	3.09927	0.41826033
	1/2	3/4	3.14972	0.41991556
4	1/5	1/5	4.29072	0.50297387
	1/4	2/5	4.87208	0.51993702
	1/3	3/5	4.96931	0.52083333
	1/2	4/5	4.99926	0.52000000

The **slides** class lacks several of the environments defined for other classes. Here's how the five basic document classes compare:

environment	article	report	book	letter	slides
abstract	•	•			
description	•	•	•	•	•
figure	•	•	•		
figure*	•	•	•		
picture	•	•	•	•	•
quotation	•	•	•	•	•
quote	•	•	•	•	•
table	•	•	•		
table*	•	•	•		
tabular	•	•	•	•	•
thebibliography	•	•	•		
theindex	•	•	•		
titlepage	•	•	•		•
verse	•	•	•	•	•