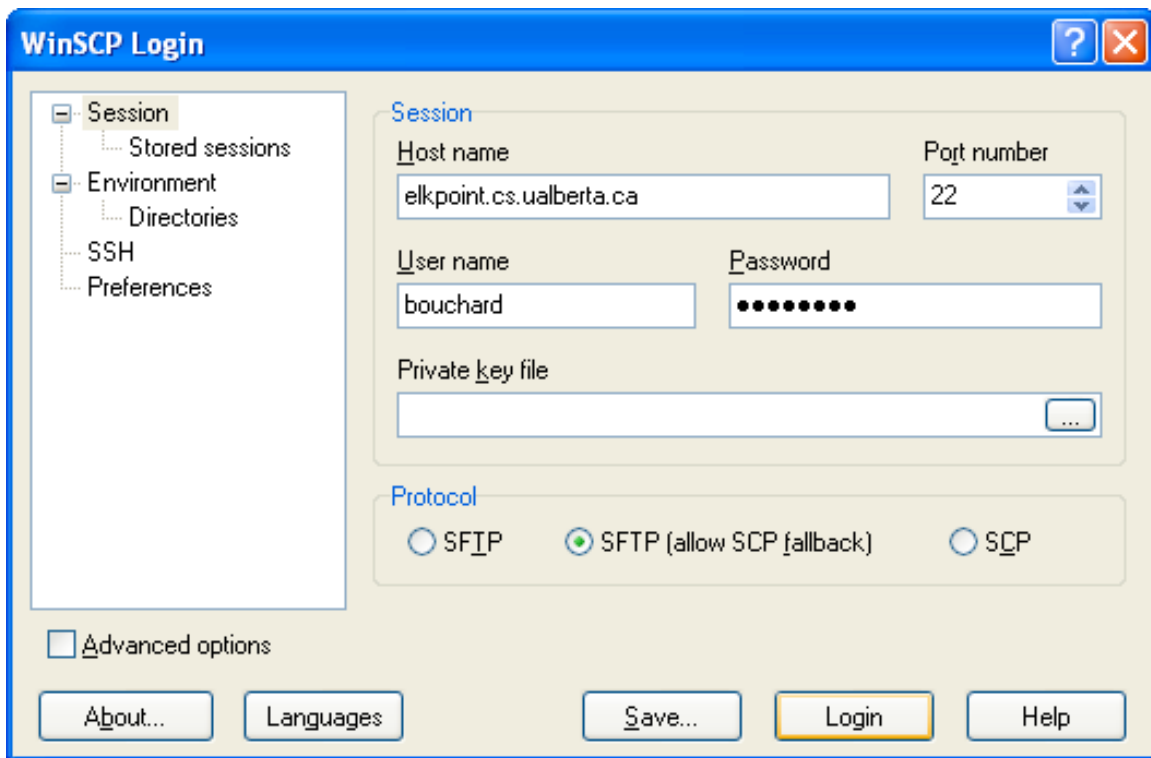
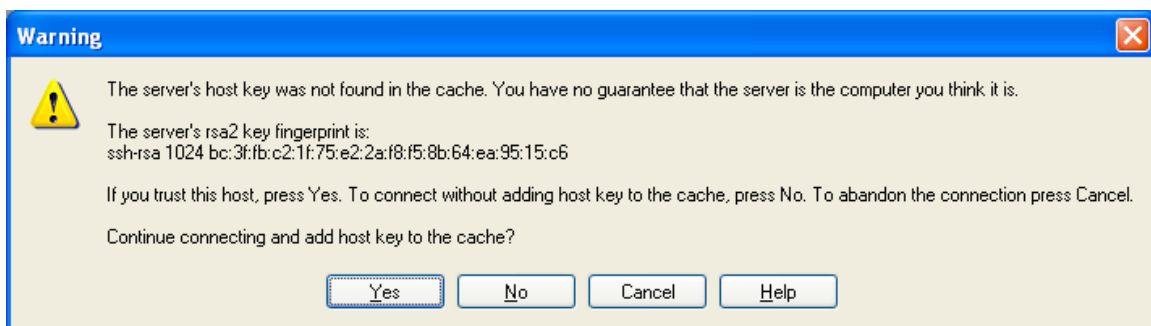


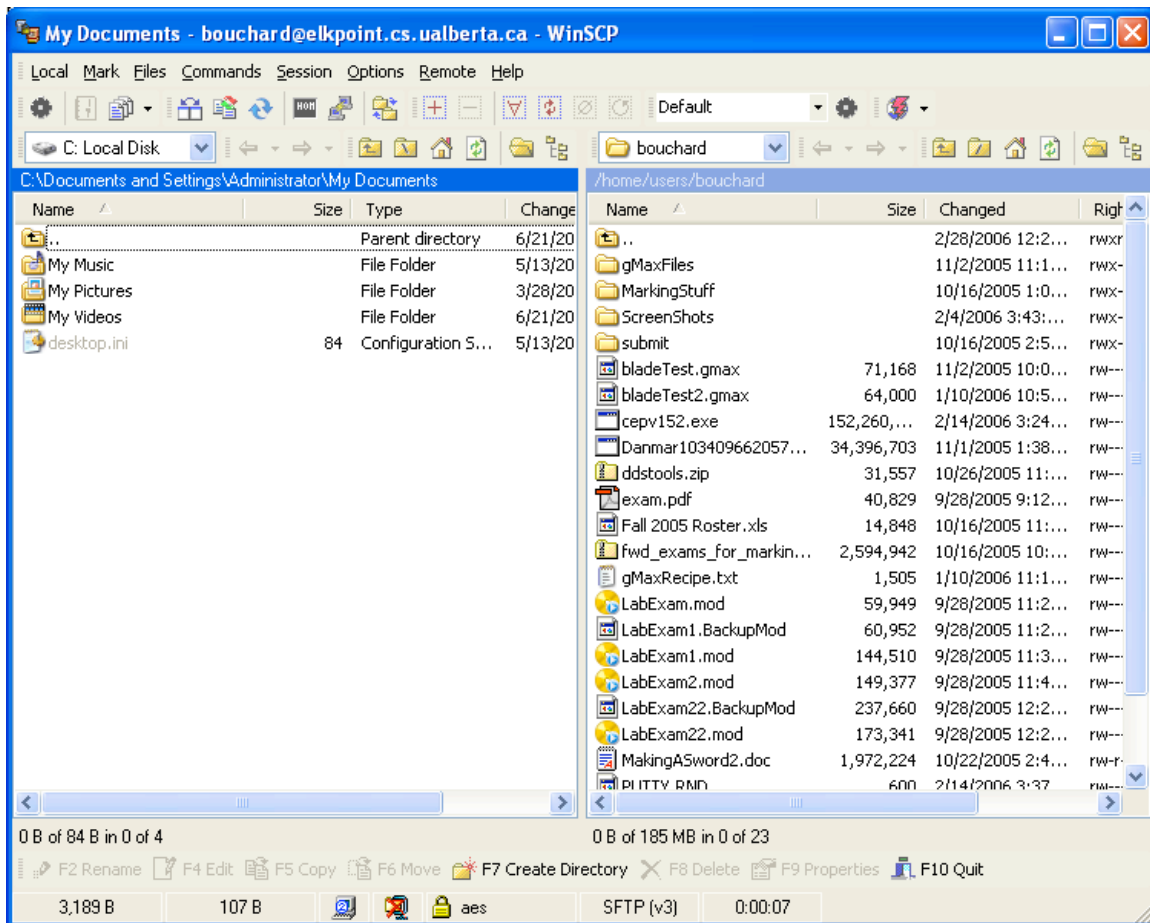
- 1) Download WinSCP (<http://winscp.net/eng/download.php>) or just grab it from the lab webpage.
- 2) Install it (double click on the file you downloaded and hit "Next" a bunch of times).
- 3) When you run it, you should get a screen similar to the one below (replace "bouchard" with your username and the password with your password):



- 4) When you've got your info filled in, just hit the "Login" button.
- 5) There may be a host key warning like the one in the screenshot. If you're looks like the one below, click "Yes", if not, take a screenshot of the warning and send it to lab admin as they will want to know.



6) You should now have something like the next screenshot where the left is your home machine and the right panel is the remote machine which should have all of your 299 files. Enjoy!



7) To find your group files, click on the dropdown that's about in the middle of the screen that has your username in it. Choose "home" from the dropdown, then click the "groups" folder (or click the "users" folder to go back to your own folder) and choose your group from the list.