

Figure 39: One point ko

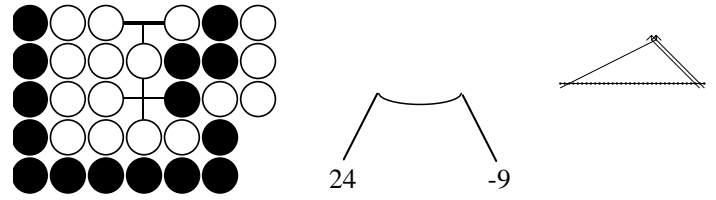


Figure 41: 33 point ko

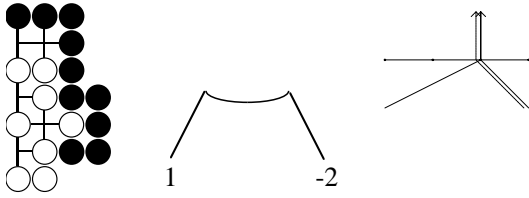


Figure 40: 3 point ko

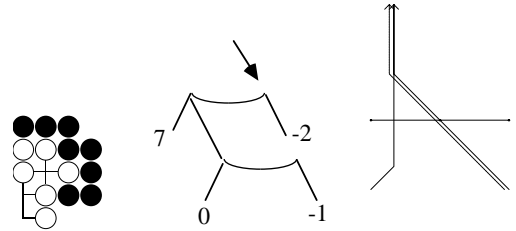


Figure 42: Kim Yonghoan's ko, node 1

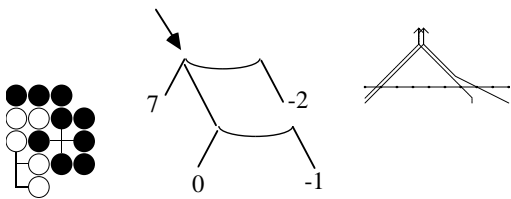


Figure 43: Kim Yonghoan's ko, node 1.1

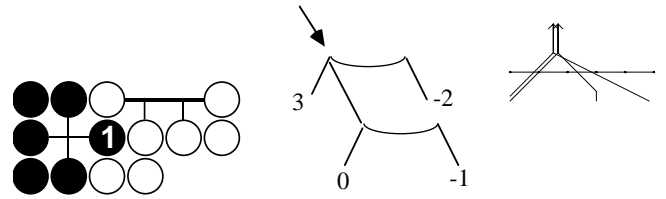


Figure 45: Capture + corridor, node 1.1

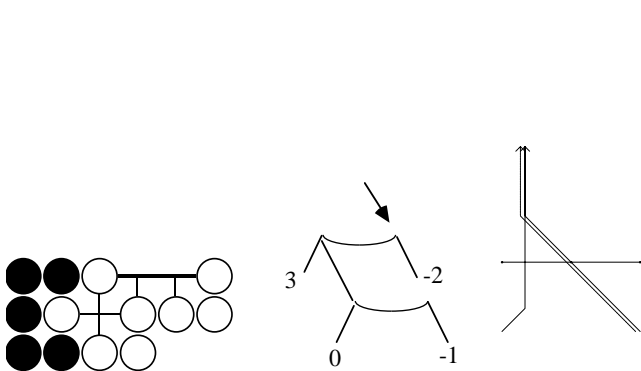


Figure 44: Capture + corridor, node 1

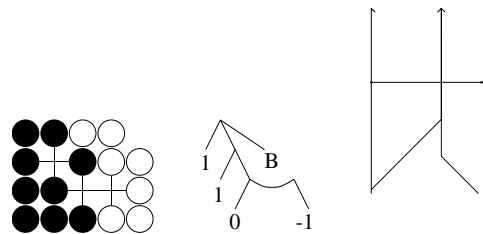


Figure 46: Small throw-in ko (B is position in 2-iterated ko)

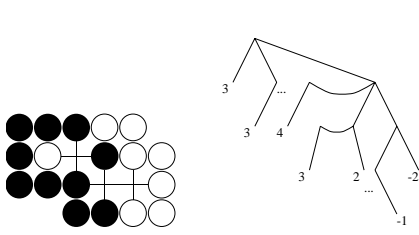


Figure 47: Bigger throw-in ko

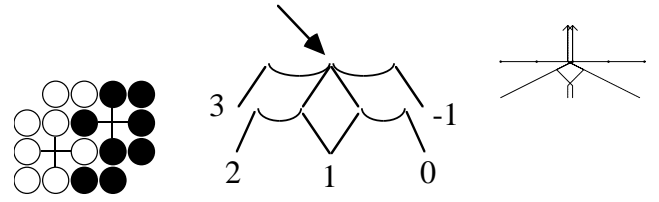


Figure 49: 2-iterated ko, node 1.1

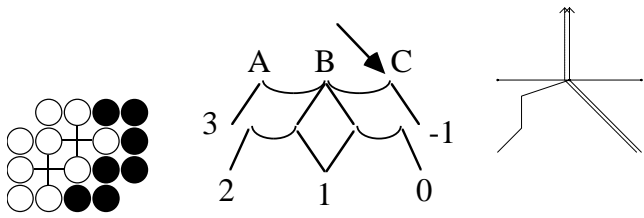


Figure 48: 2-iterated ko, node 1

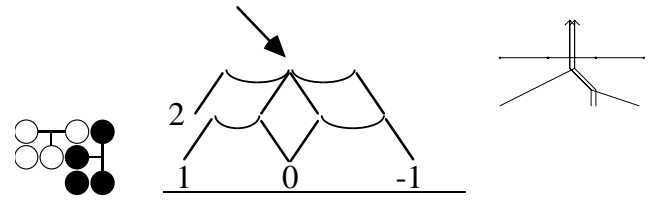


Figure 50: Corner iterated ko, node 1

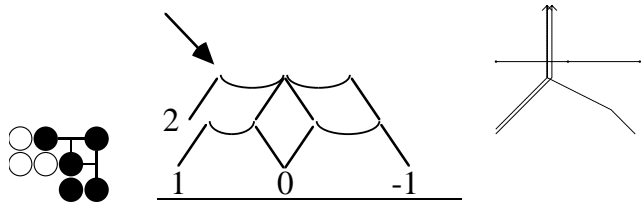


Figure 51: Corner iterated ko, node 1.1

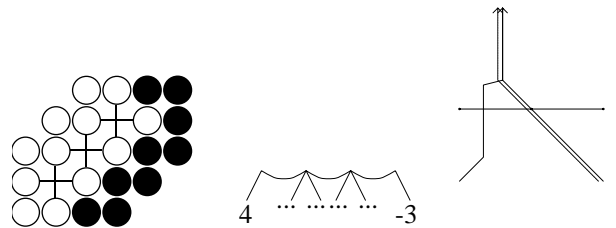


Figure 53: 3-iterated ko, node 1.3

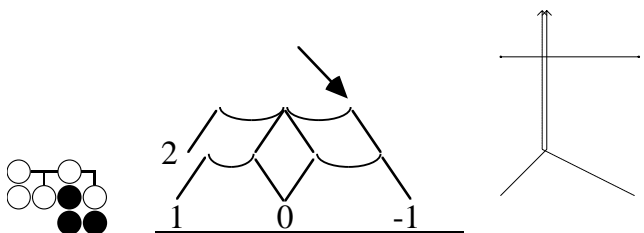


Figure 52: Corner iterated ko, node 1.4

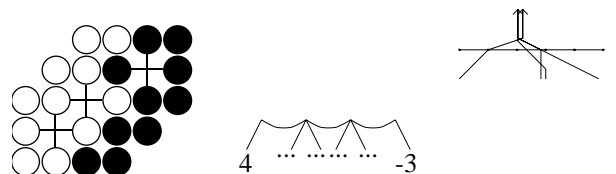


Figure 54: 3-iterated ko, node 1

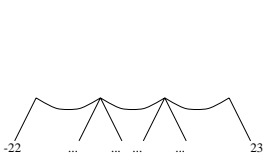
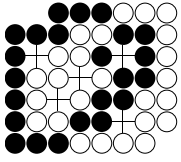


Figure 55: Hot 3-iterated ko, node 1

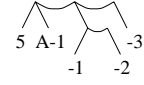
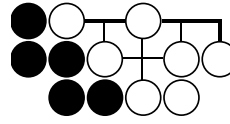


Figure 57: Real 2, node 1

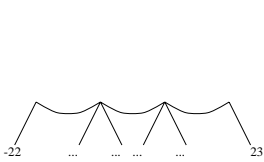
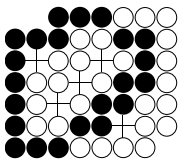
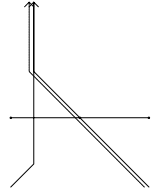


Figure 56: Hot 3-iterated ko, node 1.2

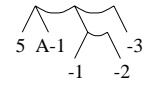
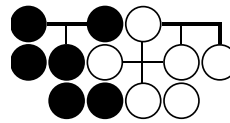


Figure 58: Real 2, node 1.2

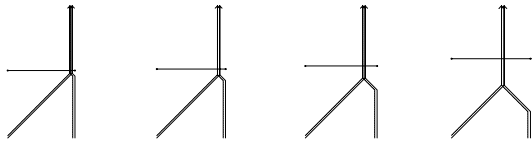
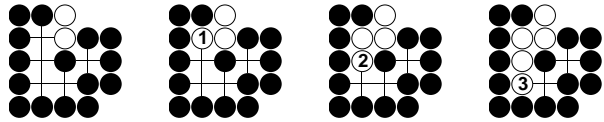
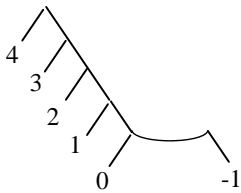
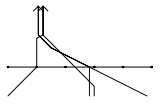


Figure 59: Corridor ko

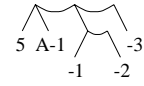
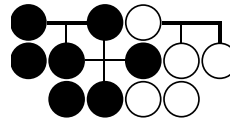


Figure 60: Real 2, node 1.2.2

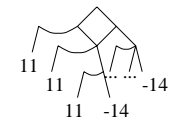
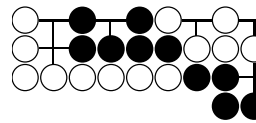
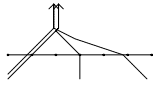
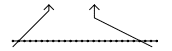


Figure 61: Approach ko, node 1



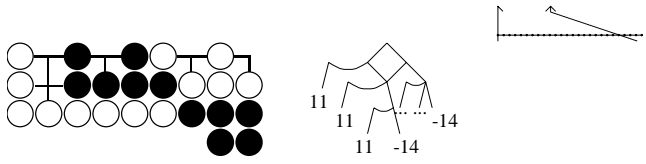


Figure 62: Approach ko, node 1.1

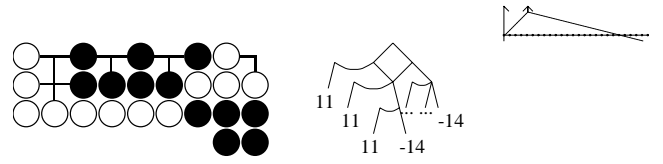


Figure 64: Approach ko, node 1.1.2

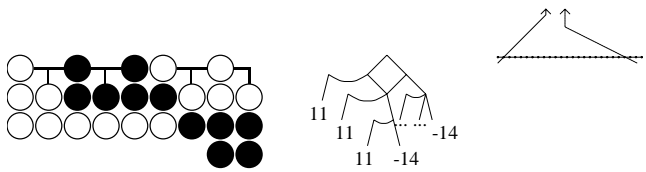


Figure 63: Approach ko, node 1.1.1

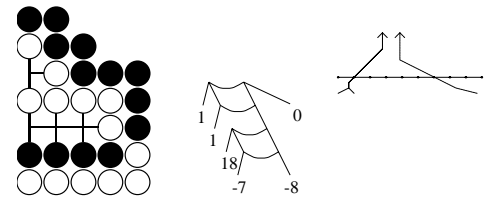


Figure 65: Approach ko, node 1

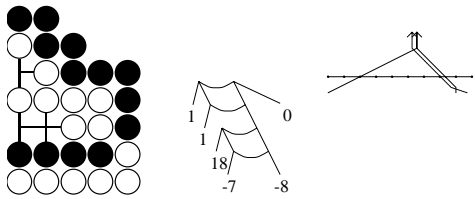


Figure 66: Approach ko, node 1.1

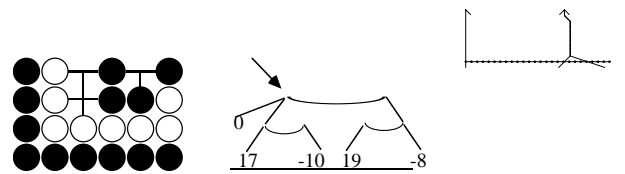


Figure 68: Mannen ko, Type 2, node 1

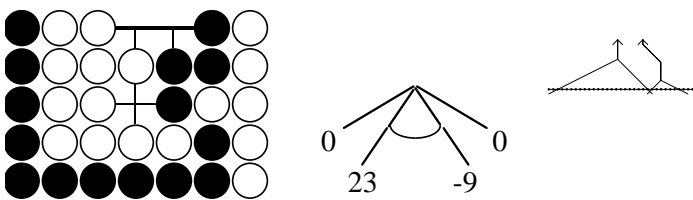


Figure 67: Mannen ko, Type 1

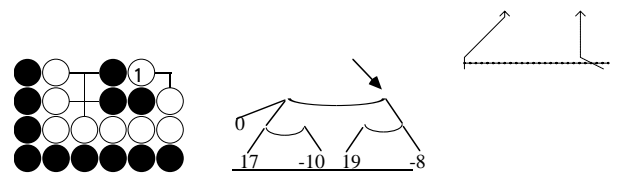


Figure 69: Mannen ko, Type 2, node 1.2

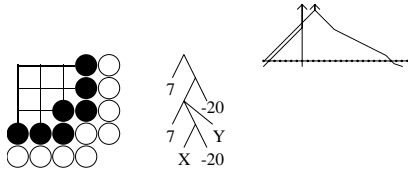


Figure 70: Murashima's ko, node 1

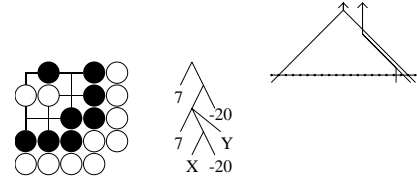


Figure 72: Murashima's ko, node 1.2.1.1

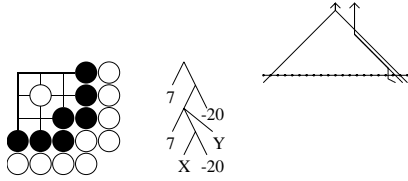


Figure 71: Murashima's ko, node 1.2

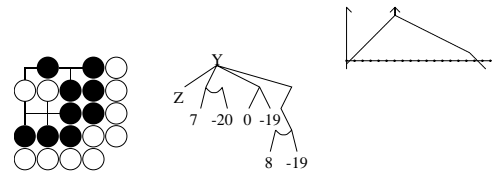


Figure 73: Murashima's ko, node 1.2.1.1.1

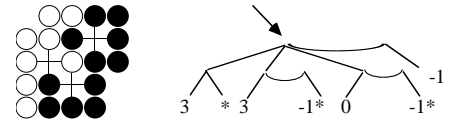


Figure 76: Rogue

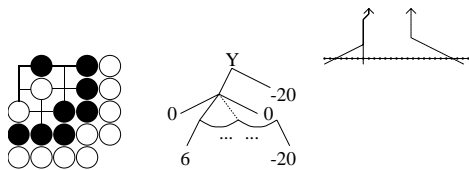


Figure 74: Murashima's ko, node 1.2.1.2 (dashed line: 1 extra prisoner for White)

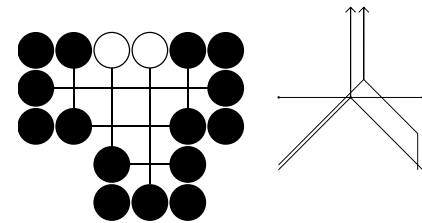


Figure 77: Takizawa's Rogue, node 1

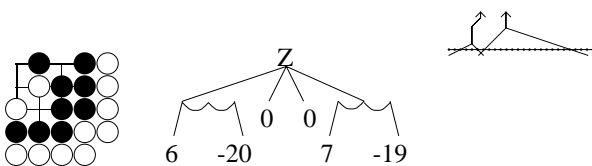


Figure 75: Murashima's ko, node 1.2.1.2.1 (dashed line: 1 extra prisoner for White)

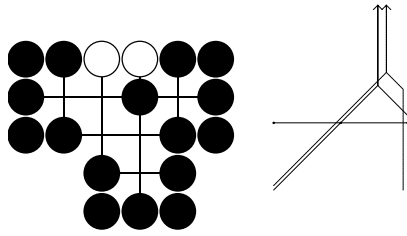


Figure 78: Takizawa's Rogue, node 1.1

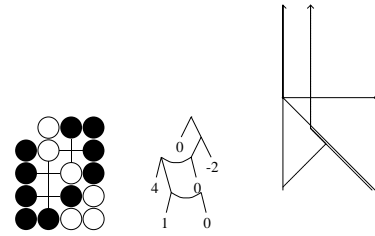


Figure 80: Kato - Fujisawa, node 1

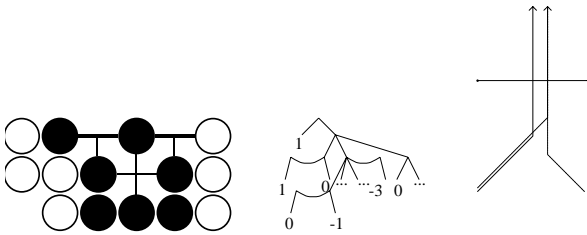


Figure 79: Kao's ko

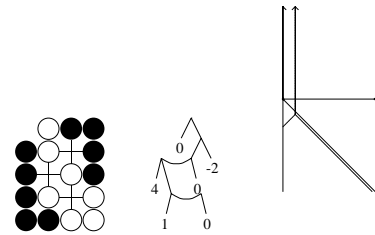


Figure 81: Kato - Fujisawa, node 1.3

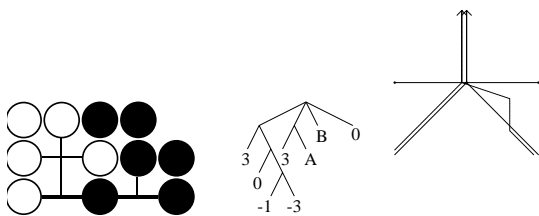


Figure 82: Unnamed ko. Remark: A and B are positions in the game graph of the "24-iterated ko".

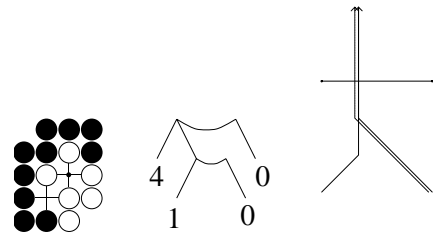


Figure 84: Real 5, node 1

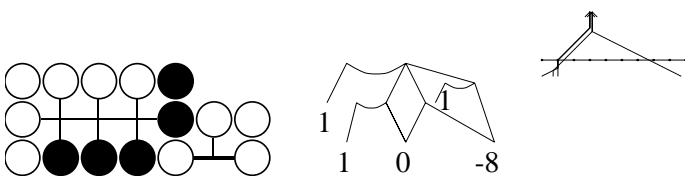


Figure 83: Real 4

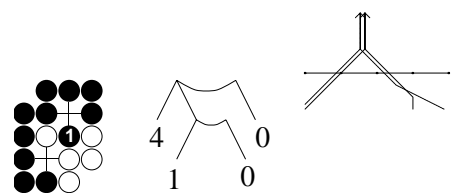


Figure 85: Real 5, node 1.1

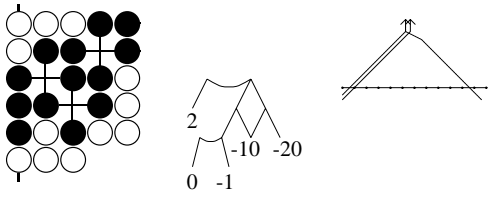


Figure 86: Real 8, node 1

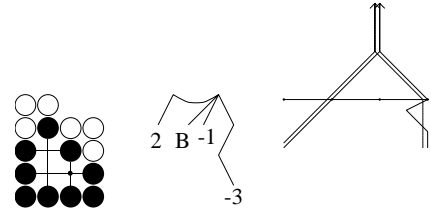


Figure 88: Real 9, node 1 (B is position in 2-iterated ko)

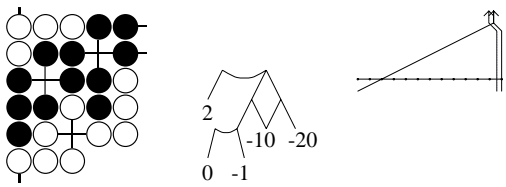


Figure 87: Real 8, node 1.2

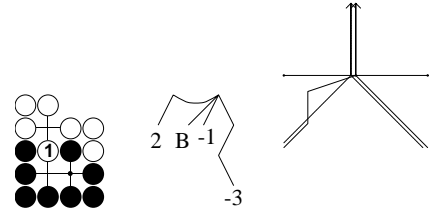


Figure 89: Real 9, node 1.2 (B is position in 2-iterated ko)

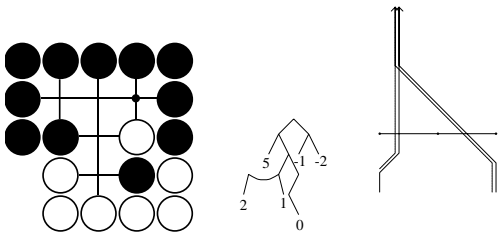


Figure 90: Real 7

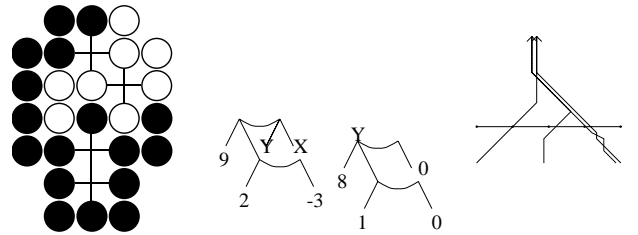


Figure 92: Real 10, node 1.3

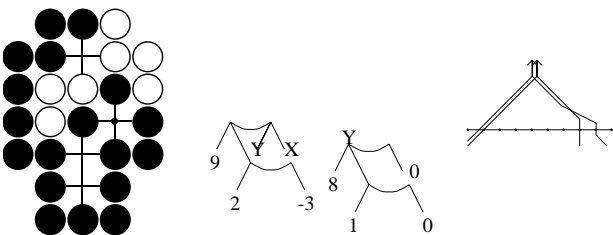


Figure 91: Real 10, node 1

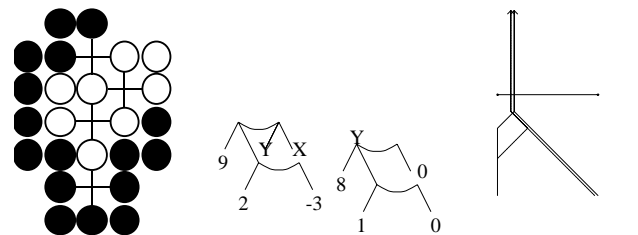


Figure 93: Real 10, node 1.3.3

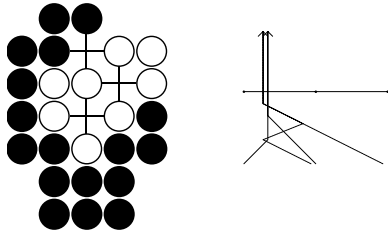


Figure 94: Real 10, node 1.3.3.3

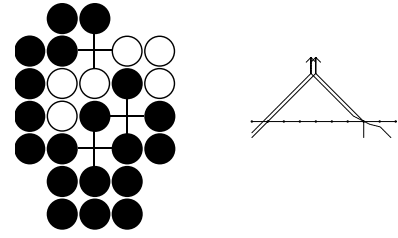


Figure 96: Real 10, no de 1.3.3.3.2

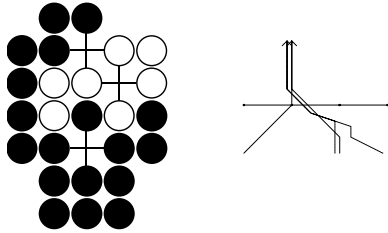


Figure 95: Real 10, node 1.3.3.3.3

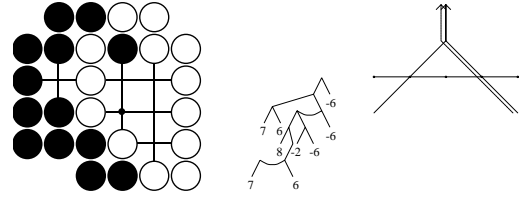


Figure 97: Real 11, node 1

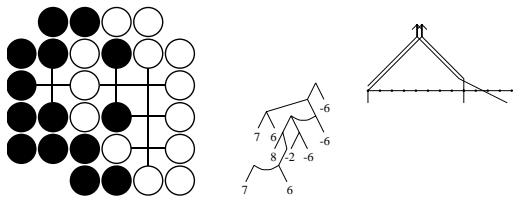


Figure 98: Real 11, node 1.1

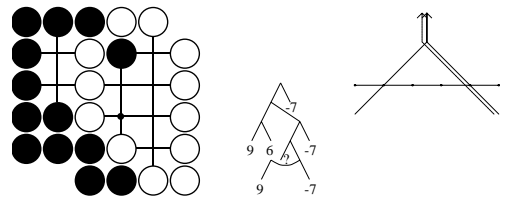


Figure 100: Real 12, node 1

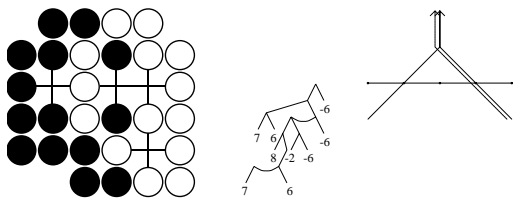


Figure 99: Real 11, node 1.1.1

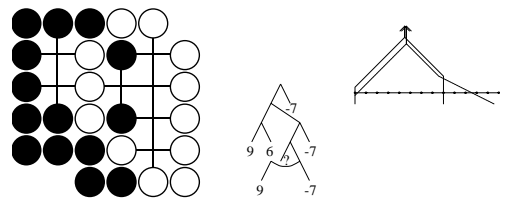


Figure 101: Real 12, no de 1.1



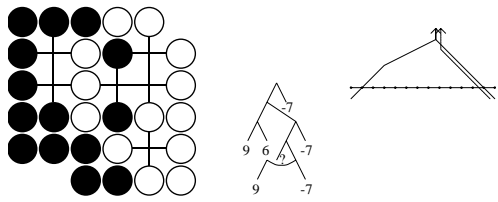


Figure 102: Real 12, node 1.1.2

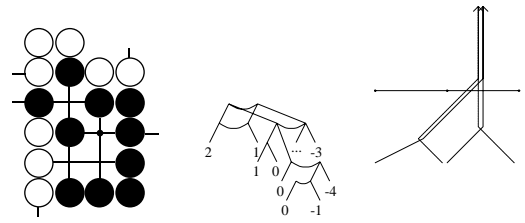


Figure 104: Cho-Yu ko, node 1

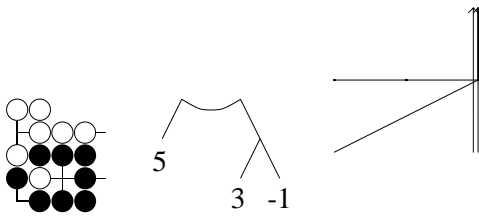


Figure 103: Chitoku's ko

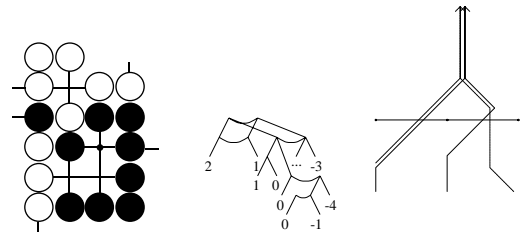


Figure 105: Cho-Yu ko, node 1.3

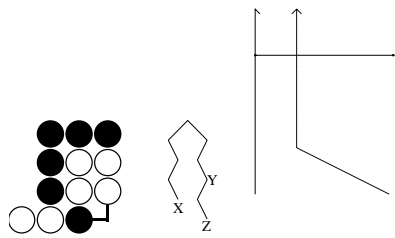


Figure 106: 3 Points Without Capturing, node 1

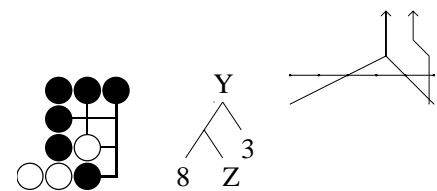


Figure 108: 3 Points Without Capturing, node 1.2.1.1

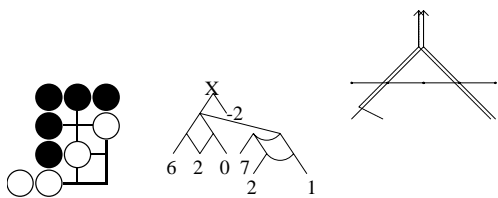


Figure 107: 3 Points Without Capturing, node 1.1.1.1.1

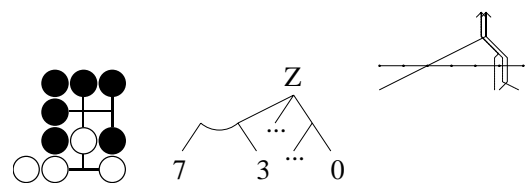


Figure 109: 3 Points Without Capturing, node 1.2.1.1.1.1